

# School Information



学校法人 理知の杜 岡崎日本語学校  
OKAZAKI JAPANESE LANGUAGE SCHOOL

## Director's Greetings

Our goal is to train students to contribute to the development of Japan, their mother country, and the whole world.

For that reason, we are developing the school, training our teachers, and encouraging students to study at our school.

Okazaki Japanese Language School is planned to be a partner school. Students will experience school events alongside the students in Toyohashi Japanese Language School.

We believe that it is important for our students to meet many people and get to know their ways of thinking during their school lives here. This will bring them great improvement and remarkable changes.

We are waiting for students who are willing to grow together, have fun together, and share moments together

**Zenko Mugishima, Incorporated educational institution Richi no Mori**



At "Okazaki Park"

# Comments from Teachers

## Okazaki Japanese Language School teachers

Hello, everyone!

I truly love Japanese.

What made you get interested in Japanese? Are there any Japanese words you like? And what would you like to do using Japanese?

Please tell me when you come to see me in Okazaki.

I would be very happy if you were to come to love Japanese language, culture, society, and people through your school life at Okazaki Japanese Language School.

Me and all the staff members would like to help you so that your experience here leads you to a great future.

Please come here without any worries.

We are waiting for you at Okazaki!

**Naeko Kawaguchi: Okazaki Japanese Language School head instructor**



Takamitsu, Instructor

## Partner school: Toyohashi Japanese Language School teachers and staff



Nakagawa, Instructor



Fujisaki, Staff



Hello! If you are interested in studying abroad in Japan, why don't you study Japanese in our schools?

I can assure that you will have a fulfilling time here.

We will fully support your school life.

I am looking forward to seeing you in Japan.

**Fumie Ito: Toyohashi Japanese Language School head instructor**

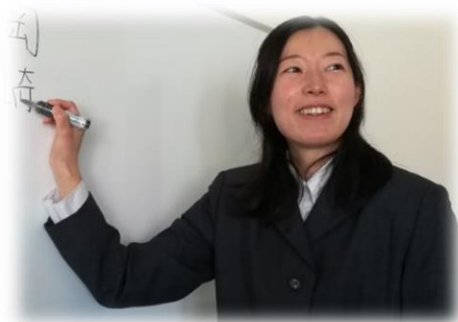
# School Features

## 1. Develop Japanese Skills

Classes are divided into Elementary, Intermediate and Advanced levels. Students can comprehensively learn all four language skills: speaking, listening, reading, and writing. We strive to teach students natural Japanese and improve their communication skills not only in a classroom but also by going out and encountering various kinds of Japanese.

## 2. Excellent Teachers

Our teachers are very hard-working and sincere. They will fully support each student to develop their Japanese skills. Our upbeat and energetic teachers make learning fun and easy to understand.



## 3. Support for Student's Career

We give detailed guidance for students who would like to go to university, technical school or graduate school. For example, students may attend a meeting for further education to find schools that they would like to go to. We will also hold personal counseling and help students prepare for Examination for Japanese University Admission for International Students (Japanese) or Japanese Language Proficiency Test.

## 4. Multicultural Learning Environment

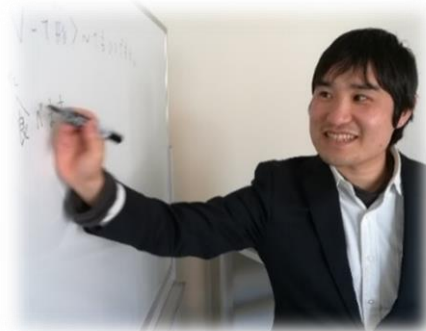
Because we recruit students from around the world, our students can interact with people from various countries and experience a multicultural life.

## 5. Dormitory Provided

We offer a designated dormitory for students to study at ease. In the dormitory, there is a study hall and a computer room, which students can use together.

## 6. Helpful Staff

Our helpful staff is always available and willing to support students' school lives. At the time that students apply for International Student visas, our staff provides guidance and support. We can help you apply to make the process easier.





## Dormitory Information

Because the dormitory is in the same building as the school, it is easy for students to commute. It is a very convenient location with a library, post office, bank, supermarket, and convenience store nearby.

The dormitory is well-outfitted and very clean. There is also a student hall with Internet as well as a kitchen, where students can freely cook and talk with their classmates. In addition, the Okazaki Cibico shopping center is nearby.



## Cultural Activities & Excursions



Toyohashi Japanese Language School is our partner school, and, as part of the school curriculum, we participate in local events in Toyohashi and Okazaki together. These opportunities happen at least once a month and will help students blend right in with the community. Through these activities, students learn not just Japanese language, but also Japanese culture and customs. Therefore, students can acquire real Japanese knowledge.



## Course Outline

Preparatory Course (2 years/1.5 years)	
<b>Pre-requisite</b>	Higher than high school graduation (Person who have studied more than 12 years at school)
<b>Study period</b>	2 year course, 1 year and 6 month course
<b>Enrollment period</b>	April or October
<b>Type of visa</b>	International student visa

- (1) **Pre-requisite:** To take the preparatory course, students will be required to have a degree higher than high school graduation.
- (2) **Visa:** The term of the preparatory course is between 1.5 years and 2 years. Students generally finish the course in March. Students should obtain study visa with the enrollment permit which will be issued by our school. It can be renewed while in school as required, if certain conditions are met.
- (3) **Enrollment period:** April or October.
- (4) **Class length:** 45 minutes per class. Below is the detail of class length.

#### Class Schedule (Monday to Friday)

Morning	①08:30~09:15
	②09:25~10:10
	③10:20~11:05
	④11:15~12:00



※ School is not open on Saturdays, Sundays, public holidays, national holidays, summer and winter breaks, and the end of the semester.

- (5) **Part-time jobs:** Students who have a study visa are allowed to work part time within set hours. Students must be permitted by the Immigration Service to take part in activities other than those for which their status of residence allows.
- (6) **Other:** In case of violation of laws or regulations, violation of school rules, unpaid tuition, long-term absences, poor grades, or disobedience towards the principal, we hold the right to report the student to Immigration Service and order the student to return home.

## Course Schedule

### Course length and content

Course name	Period of study	Starting period -Ending period	Class number of days	Class number of hours
<b>Preparatory course (two years)</b>	2 years	April ~ March	80 weeks	1600 hours
<b>Preparatory course (1.5 years)</b>	1 year 6 months	October ~ March	60 weeks	1200 hours

### Course contents

### Preparatory course (two years)

Class level	Number of hours			Class contents (outline)
	Class number of weeks	Class number of hours per week	Total class hours	
<b>Beginner</b>	20 weeks	20 hours (5 days)	400 hours	<ul style="list-style-type: none"> <li>Vocabulary and basic kanji</li> <li>Beginner grammar</li> <li>Basic daily conversation</li> </ul>
<b>Intermediate</b>	20 weeks	20 hours (5 days)	400 hours	<ul style="list-style-type: none"> <li>Intermediate grammar</li> <li>Reading complicated sentences</li> <li>Acquisition of daily conversation skills</li> </ul>
<b>Lower advanced</b>	20 weeks	20 hours (5 days)	400 hours	<ul style="list-style-type: none"> <li>Advanced grammar</li> <li>Reading newspapers, magazines, and novels, etc.</li> <li>Conversation for a variety of situations</li> <li>Training for writing short essays and interviews</li> </ul>
<b>Upper advanced</b>	20 weeks	20 hours (5 days)	400 hours	<ul style="list-style-type: none"> <li>Reading more complicated sentences</li> <li>Conversation for specialized situations</li> <li>Learning technical information, as required</li> </ul>

### Preparatory course (1.5 years)

Class level	Number of hours			Class contents (outline)
	Class number of weeks	Class number of hours per week	Total class hours	
<b>Beginner</b>	20 weeks	20 hours (5 days)	400 hours	<ul style="list-style-type: none"> <li>Vocabulary and basic Kanji</li> <li>Beginner grammar</li> <li>Basic daily conversation</li> </ul>
<b>Intermediate</b>	20 weeks	20 hours (5 days)	400 hours	<ul style="list-style-type: none"> <li>Intermediate grammar</li> <li>Reading complicated sentences</li> <li>Acquisition of daily conversation skills</li> </ul>
<b>Advanced</b>	20 weeks	20 hours (5 days)	400 hours	<ul style="list-style-type: none"> <li>Advanced grammar</li> <li>Reading newspapers, magazines, and novels, etc.</li> <li>Conversation for a variety of situations</li> <li>Training for writing short essays and interviews</li> </ul>

# City of Okazaki: the location of Okazaki Japanese Language School



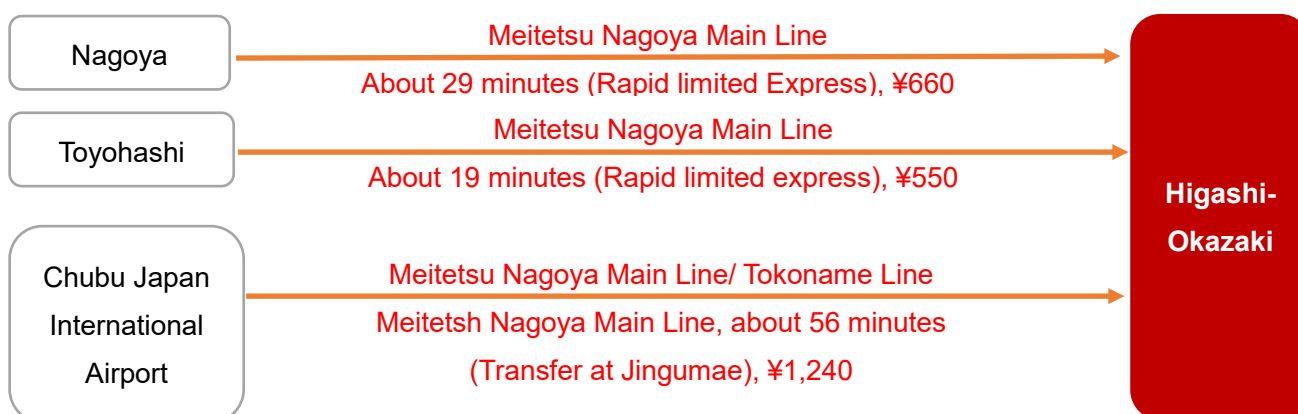
## 1. About city of Okazaki

Okazaki is the birthplace of Ieyasu TOKUGAWA, who established the Edo government. Because it was the Okazaki clan's castle town during Edo period, there are many historical buildings such as Daiju Temple, Iga Hachimangu Shrine, and Hacchogura street. It is a town with colorful seasons; you can enjoy full bloom cherry blossom in spring, magnificent firework festivals in summer, beautiful leaf viewing in autumn, dancing snowfall in winter. It is also a main city of politics, economy, and culture in the Western part of Aichi prefecture with over 380,000 people. The prices here are affordable, and it is a warm town in which it is easy to live.



## 2. Location

Okazaki is about 35 kilometers away from Nagoya, which is in the center of Aichi prefecture. Higashi-Okazaki station is in the central urban area, and it takes about 13 minutes from the station to the school by foot. It is in an accessible location about at least 30 minutes from Nagoya.



## 3. Main tourist spots in Okazaki

### • Okazaki Park (Okazaki Castle)

Okazaki park, with Okazaki Castle in the middle, is a recreational spot for locals. It is known for its many beautiful plants. Okazaki Castle is the birthplace of Ieyasu TOKUGAWA, the founder of the Edo government, and it is one of the 100 most popular Japanese castles. In spring, it is famous as a flower viewing spot, and has been nominated for one of the 100 most popular Japanese spots for cherry blossom viewing. In summer, one of the best firework festivals takes place, and around 400,000 people come to see it every year.







- **The Ieyasu and Mikawa Bushi Museum**

The Ieyasu and Mikawa Bushi Museum is a museum dedicated to the history of the Ieyasu family, which traces chronologically from Ieyasu's ancestors, to his birth, to his conquest and the success of his warriors. In addition to the military commanders' armor and diorama exhibit of the Battle of Sekigahara, there is a booth where you can try on armor and hold a sword. You can learn real history by directly interacting with the exhibits.



- **Iga Hachimangu Shrine**

Iga Hachimangu is a shrine built in 1470. The Tokugawa family prized it as a guardian for the future prosperity of their descendants and for luck in battle. It is said that Ieyasu made it a habit to visit here to pray before major battles. Most of the shrine, such as the main shrine, the gate, and the bridge, are designated as Important Cultural Properties. Nowadays, many people visit here to pray for success.



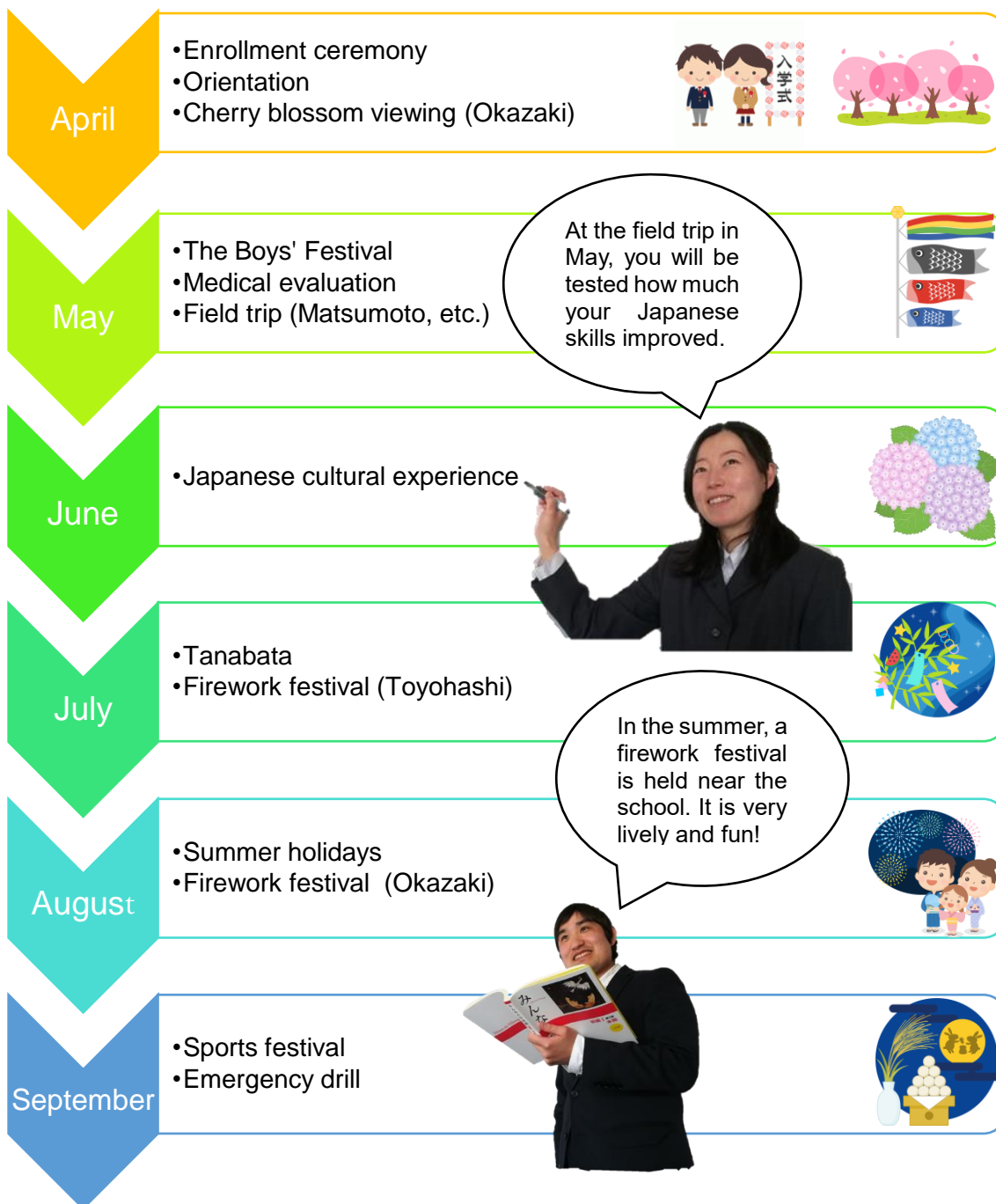
- **Hacchokura Street (Haccho miso)**

Haccho miso is made from only soy beans and salt. The reason it is called Haccho miso is because it was made 8-cho (Haccho, or about 800 meters) from Okazaki castle. In the cellar, you can see the craftsmen putting soy yeast into a huge wooden bucket and piling heavy rocks onto it. You can also try Haccho miso when you visit.



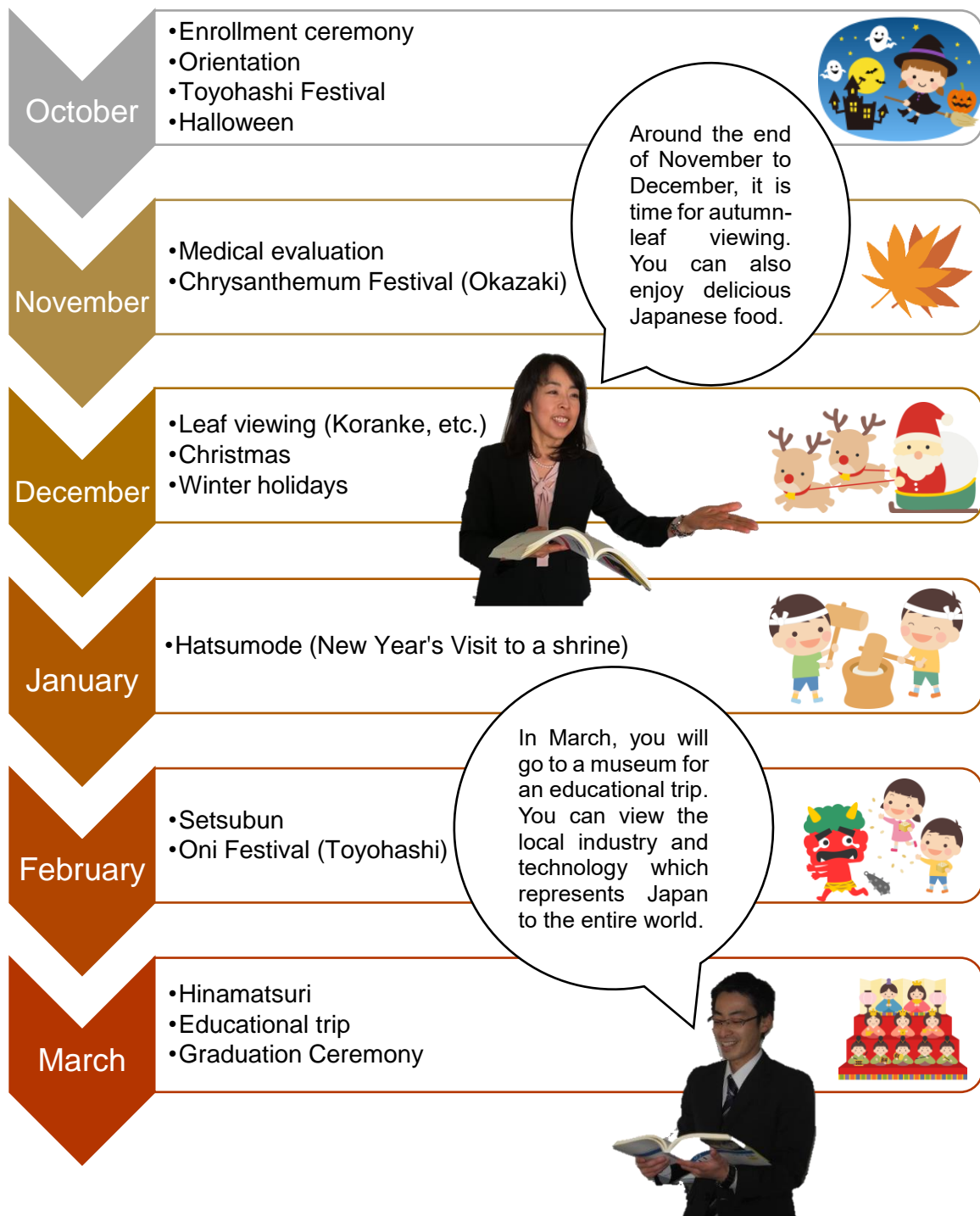
# School Activities

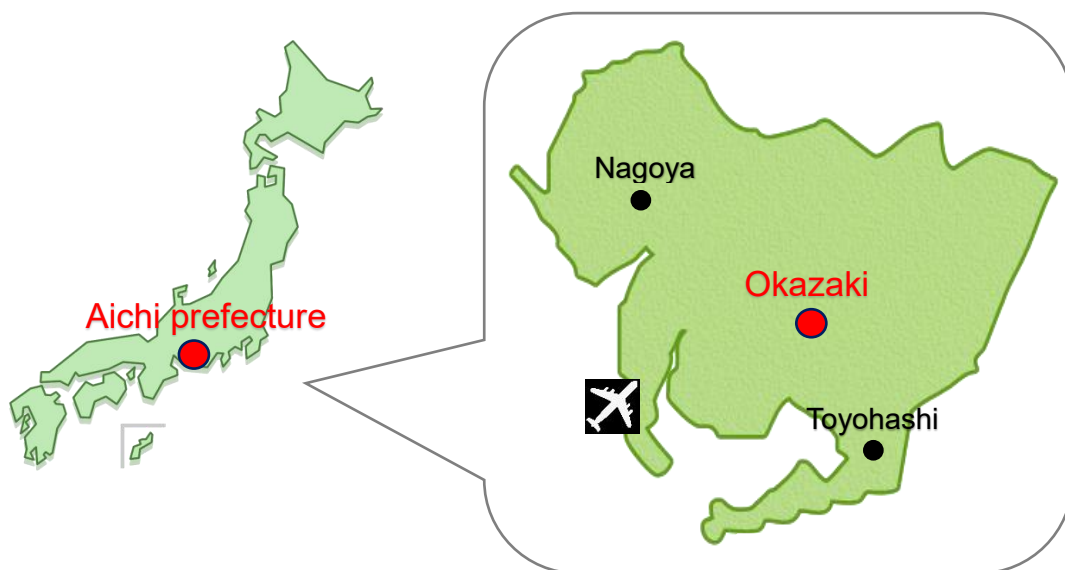
## Academic Calendar



## Japanese Cultural Activities

Our goal is for students will learn not only Japanese language but also Japanese culture. For students to understand all parts of Japan, we have various kinds of events in our curriculum.





学校法人 理知の杜 岡崎日本語学校

**OKAZAKI JAPANESE LANGUAGE SCHOOL**

1-1 Kosedorinishi, Okazaki-shi, Aichi-ken, 444-0059

TEL +81-564-73-0531

FAX +81-564-73-0532